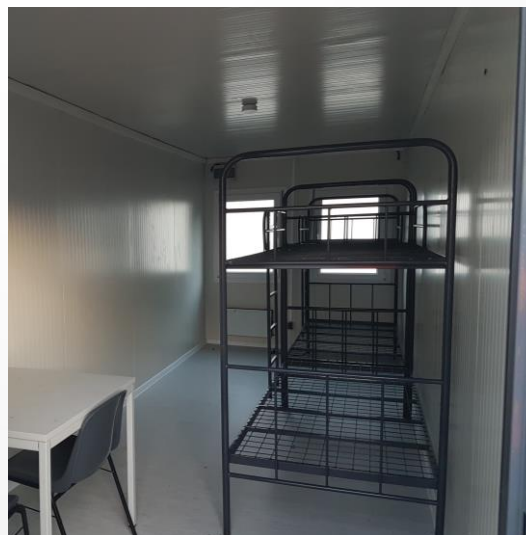




Visas mūsu piedāvāto konteineru vienības ir pavisam jaunas.  
Pastāvīga atrašanās vieta – Vācija. Piegāde pēc pieprasījuma.

Biroja / dzīvojamais konteiners ir aprīkots ar diviem logiem ar žalūzijām, apgaismojumu un visām elektriskām iekārtām: elektrisko sildītāju ar konvekcijas ventilatoru, utt. Pēc pieprasījuma mēs varam nodrošināt arī pamata mēbeles.



Sanitārie konteineri ir pilnībā aprīkoti ar tualetes vai dušas kabīnēm, apgaismojumu, elektriskiem katliem un elektrisko sildītāju ar konvekcijas ventilatoru.



FLATPACK CONTAINER OFFICE SANDWICH PANEL SYSTEM		
TECHNICAL SPECIFICATIONS		
PRODUCTION TYPE	Modular Construction with special formed and furnace painted galvanized metal sheet body.	
	TYPE:Rated Dimension : 2.40x6.00x2.60 m,	
	All materials certificated by TSE.	
TECHNICAL DATAS	Snow Load	80 kg/m <sup>2</sup>
	Wind Speed	102 km/saat
	External Wall Heat Transmission Coefficient	K: 0.26 Kcal/m <sup>2</sup> hC
	Internal Wall Heat Transmission Coefficient	K: 0.26 Kcal/m <sup>2</sup> hC
	Roof Heat Transmission Coefficient	K: 0.68 Kcal/m <sup>2</sup> hC
	Floor Heat Transmission Coefficient	K: 3.85 Kcal/m <sup>2</sup> hC
	Base-Plate(chassis) Load Capacity	200 kg/m <sup>2</sup> Calculated in accordance with T.S 498
EXTERNAL WALLS	External Wall Height	2600 mm
	Outer Surface Covering	<b>50 mm thickness of Sandwich Panel:</b> outer surface covering: 0,50 mm thick of RAL 9002 coil painted galvanized sheets Insulation in between: 45 mm thickness of Polistren foam (16 kg/m <sup>3</sup> ) Inner surface covering: 0,50 mm thick of RAL 9002 coil painted galvanized sheets
INTERNAL WALLS	Internal Wall Height	2320 mm
	Internal Wall Panel	50 mm thick of panels;  both surfaces are covered by 0,50 mm thick of RAL 9002 coil painted galvanized sheets insulated with 45 mm thick of polistrene foam (16 kg/m <sup>3</sup> ) Fire Class B1
FLOOR COVERING	Construction	100*58/50 U/C 1.50 / 2.00 mm. Galvanized DX51+Z C / U sectioned cold formed profiles
	Insulation (Optional)	-
	Covering	PVC Roll as floor covering on the 16mm thick FIBER CEMENT board
CEILING COVERING	Covering	50 mm thick of panels
ROOF	Roof Construction	180*58*1.5 U framed , 80*50*1 C sectioned horizontal profiles ( Galvanized DX51+Z ) C / U sectioned cold formed profiles ( rain waters are taken out by inside of corner posts.)
	Covering	
DOOR JOINERIES	External door (1,2 mm galvanized metal sheet frame)	935/1981 mm Insulated steel sheet doors (outer size),  0,5 mm film covered COIL COATING sistem RAL9002 painted Galvanized Sheets , both sides are EPS filled, wing wide:45 mm
	Internal door (1,2 mm galvanized metal sheet frame)	840/1960 mm Mdf-lam Pressed door (outer dimensions)
	Doors for Wet areas (1,2 mm galvanized metal sheet frame)	620x1960 mm Mdf-lam Pressed door (outer dimensions)
WINDOW JOINIRIES	Door Lock and handle	External door locks are cylindrical, internal doors have encased locks.Brandmark: <b>ITO</b> or <b>KALE</b> , yellow or grey coloured metal door hadles
	Window (1,2 mm galvanized metal sheet)	970/1200 mm PVC Framed Windows
	Kitchen-wc-shower (If available)	120 mm circled electrical aspirator
GLASS	Single Glass	-
	Double Glass(Glazing)	4+9+4 mm – Brand: SISECAM (standard)

PAINT	External door and window frames	Prepainted with COIL COATING SYSTEM	
	Internal Door Frames	Prepainted with COIL COATING SYSTEM	
	Outer Corner	1 layer rapid primer + 1 layer semi- synthetic oil paint –  will be applied with special membraned dust paint tool.BELT COLOR: RAL 3020 Kırmızı or RAL 5022 DARK BLUE	
ELECTRICAL and PHONE INSTALLATION on plaster	Other metal parts (base plate(chassis),bearing construction )	1 layer rapid Primer	
	Cable	(2000 Watt,220 Volt , 50 Hz.),	
		Socket sorties 3X2.5 mm <sup>2</sup> NYM, socket lines 4X2.5 mm <sup>2</sup> NYM	
		Lighting sorties 2X1.5 mm <sup>2</sup> NYM, linesi 3X1,5 mm <sup>2</sup> NYM, TSE CERTIFICATE	
	Lighting Armatures	Usual Areas	Round Armatures – Lighting Bulbs Brandmark:TSE CERTIFICATE, Armatures Brandmark: TSE CERTIFICATE
		Wet volume, Over exit door	Globe –IP 44: TSE CERTIFICATE
	Electrical Sockets,switches		TSE CERTIFICATE or equivalent ,
	Fuses and fuses boxes		Fuse: TSE CERTIFICATE
			Fuse Boxes: TSE CERTIFICATE
	Phone sockets		Brandmark :TSE CERTIFICATE or equivalent (appropriate number will be supplied with respect to the plan)
SANITARY INSTALLATION on plaster (If available)	Lavatory/Washbasin (if available)	37x45 cm Wall type	
		Brandmark :TSE CERTIFICATE	
	Lavatory and shower taps (if available)	Brandmark :TSE CERTIFICATE	
		Taps are wall mounted in cold water installation lavatories and taps have outlets from lavatories in hot water installation lavatories.	
	Water Closet	Western style water closet,	
		Brandmark: TSE CERTIFICATE Plastic flushing cistern	
		WC taps- Brandmark: TSE CERTIFICATE	
	Shower Tray	80 cmx80 cm Acrylic ,	
		Brandmark:TSE CERTIFICATE	
	Kitchen Sink	Chromium-plated 50/100 cm double, lower chipboard cupboard.Top cupboard above the cupboard is not included.	
Accessories		PVC Paper holder,soap dish,mirror, shelf, closet cover <b>(TSE CERTIFICATE)</b>	
pipes	Clean water	PPRC - Brandmark : TSE CERTIFICATE	
	Waste water	PVC - Brandmark: TSE CERTIFICATE	
LIFTING SYSTEM	The loading and unloading facility shall be made by connecting the steel ropes lying in the same interval to the iron Lifting eyes mounted hiddenly on the corners, to the lockers.If required the containers shall be two or multi-storied. The transport system of all containers will be organized by concerning that specification. WC, Shower containers will be produced with insulation or without any insulation		