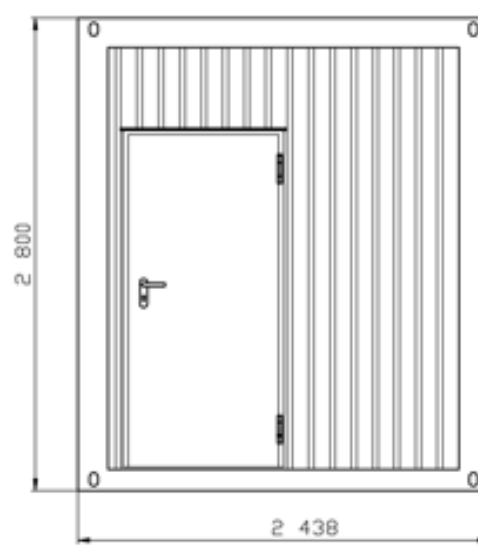
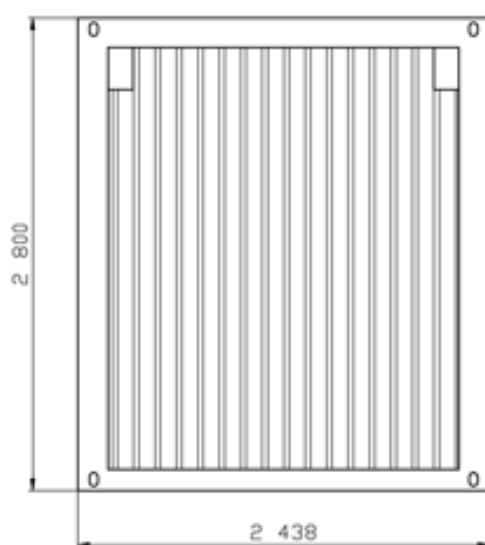
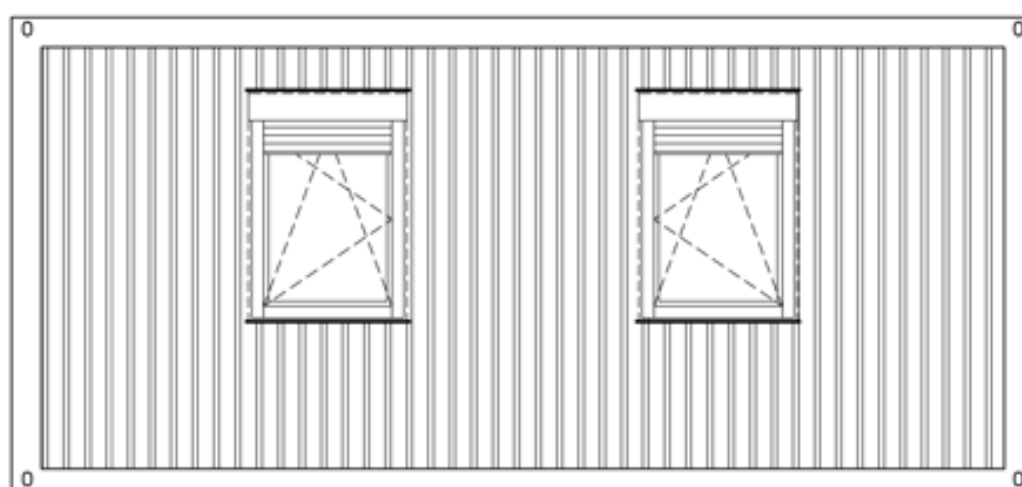
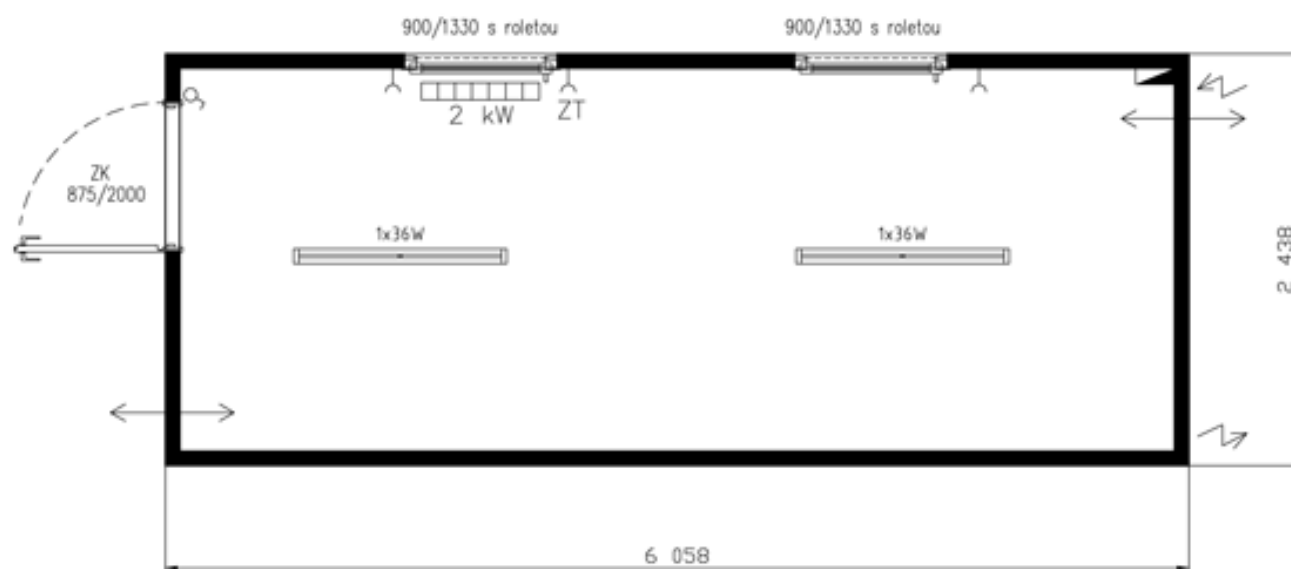



# IM 02 - Standard Line



	typ	IM 02
	izolace	80-60-80

**Roofing** galvanized profiled sheet 0,75 mm,  
wave depth 35 mm

---

**Insulation** mineral wool 80 mm

---

**Heat transfer coefficient** U=0,527 W/m<sup>2</sup>K (80 mm)

---

**Vapour barrier** PE film 0,11 mm

---

**Inside panelling** bouth sides laminated chipboard 10mm, white

---

**Roof drainage** 4 plastic leads ø60 mm

---

**Floor loading** 150 kg/m<sup>2</sup>

---

## Wall

---

**Outside panelling** galvanized profiled sheet 0,55mm , wave depth 10mm

---

**Surface finish** light and weather resistant two-component paint in RAL Tone acc.to choice

---

**Insulation** mineral wool 60 mm

---

**Heat transfer coefficient** U=0,632 W/m<sup>2</sup>K (60mm)

---

**Vapour barrier** PE film 0,11 mm

---

**Inside panelling** bouth sides laminated chipboard 10mm, white

---

## Floor

---

**Construction** steel construction, transverse floor beams, floor sheet 0,55mm

---

**Insulation** mineral wool 80 mm

---

**Heat transfer coefficient** U=0,560 W/m<sup>2</sup>K (80 mm)

---

<b>Floor</b>	chipboard 22 mm / Cetris 20 mm
<b>Flooring</b>	PVC 1,5 mm, grey
<b>Floor loading</b>	250 kg/m <sup>2</sup>
<b>Vapour barrier</b>	PE film 0,11 mm

---

## Wiring

---

<b>Norm</b>	ČSN or VDE
<b>Inlet - Outlet</b>	400V/32A
<b>Light</b>	2× fluorescent light 1×36W with covering
<b>Accessories</b>	3× socket, 1× switch, 1× el.heating 2 kW with termostat
<b>Switchboard</b>	1× 10A, 2× 16A, FI-circuit breaker

---

## Equipment

---

<b>Doors</b>	1× metal door, galvanized 875/2000 mm, rubber seal, cylindrical lock, painted in container's tone
<b>Windows</b>	2× plastic windows 900/1330mm, 1 wing, hinged-opened, incl. PVC blind, white

---