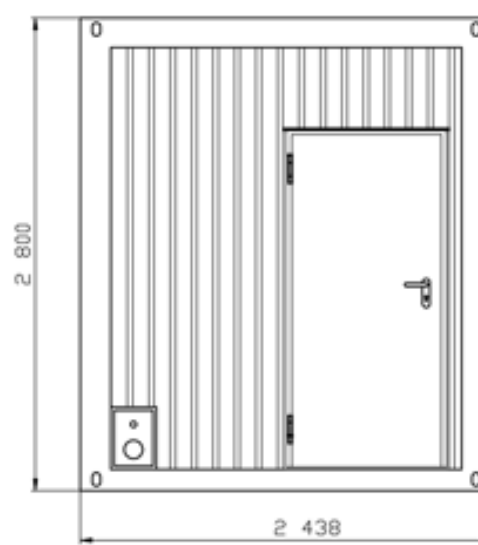
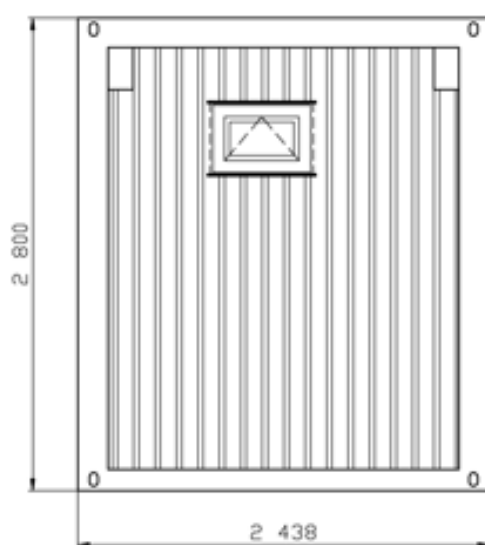
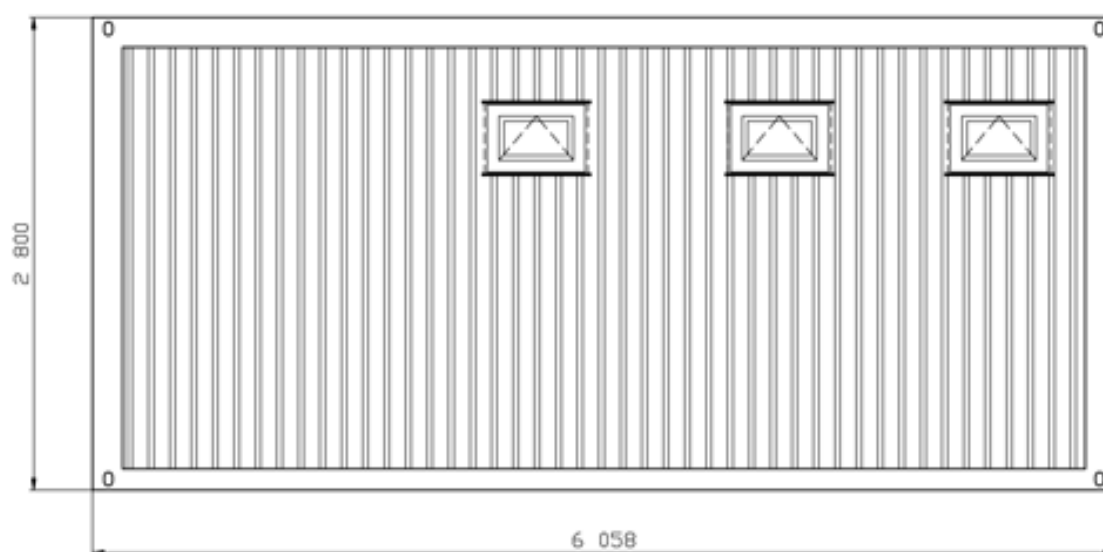
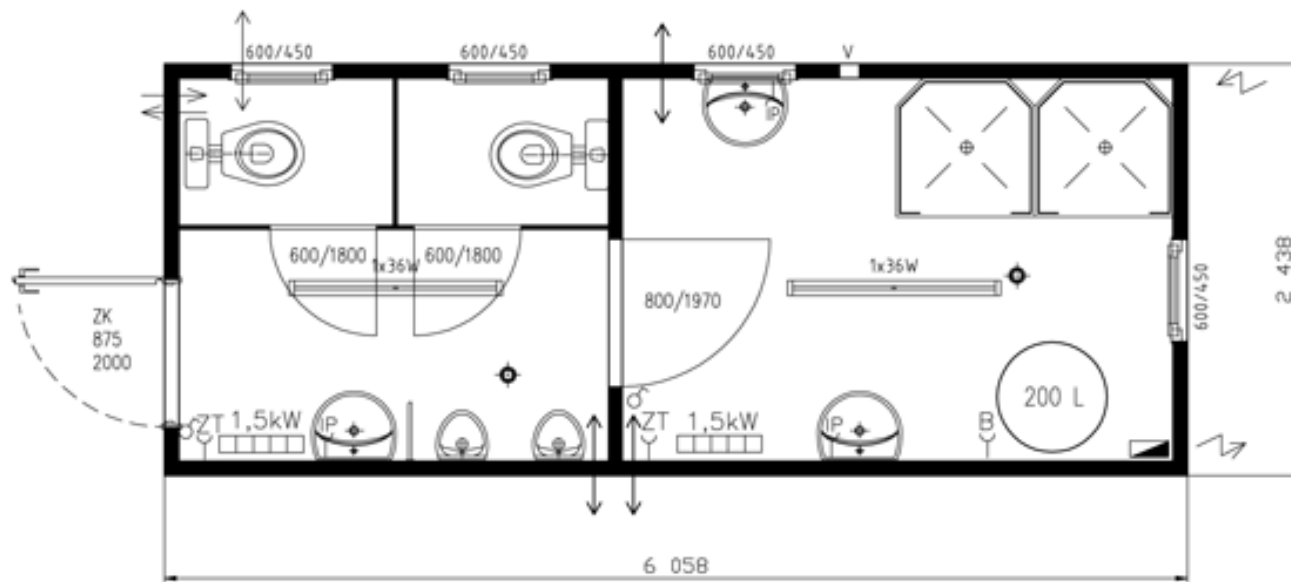



IM 09 - Standard Line



	typ	IM 09
	izolace	80-60-80

Roofing	galvanized profiled sheet 0,75mm , wave depth 35mm
Insulation	mineral wool 80 mm
Heat transfer coefficient	U=0,527 W/m ² K (80 mm)
Vapour barrier	PE film 0,11 mm
Inside panelling	both sides laminated chipboard 10mm, white
Roof drainage	4 plastic leads ø60 mm
Floor loading	150 kg/m ²

Wall

Outside panelling	galvanized profiled sheet 0,55mm , wave depth 10mm
Surface finish	light and weather resistant two-component paint in RAL tone acc.to choice
Insulation	mineral wool 60 mm
Heat transfer coefficient	U=0,632 W/m ² K (60 mm)
Vapour barrier	PE film 0,11 mm
Inside panelling	both sides laminated chipboard 10mm, white

Floor

Construction	steel construction, transverse floor beams, floor sheet 0,55mm
Insulation	mineral wool 80mm
Heat transfer coefficient	U=0,560 W/m ² K (80 mm)
Floor	Cetris 20 mm

Flooring	GFK casted floor
-----------------	------------------

Floor loading	250 kg/m ²
----------------------	-----------------------

Vapour barrier	PE film 0,11 mm
-----------------------	-----------------

Wiring

Norm	ČSN or VDE
-------------	------------

Inlet - Onlet	400V/32A
----------------------	----------

Light	2× flourescent light 1×36W with covering
--------------	--

6× socket,

Accessories	2× switch
--------------------	-----------

2× switch

2× el.heating 1,5 kW with thermostat

Switchboard	1× 10A, 4× 16A, FI- circuit braker
--------------------	------------------------------------

Equipment

Doors	1× metal door, galvanized 875/2000mm, rubber seal, cylindrical lock, painted in container tone 1x internal door 800/1970 mm, white 2x internal door 600/1800 mm, white
--------------	--

1× metal door, galvanized 875/2000mm, rubber seal, cylindrical lock, painted in container tone

1x internal door 800/1970 mm, white

2x internal door 600/1800 mm, white

Windows	4x plastic windows 600/450 mm, hinged, incl. plastic blind
----------------	--

Sanitary	2x WC, 3x washbasin - cold/hot water, 2x shower, 2x urinal, 1x urinal divider, 1x boiler 200l, 2x floor outlet
-----------------	---

2x WC, 3x washbasin - cold/hot water, 2x shower,

2x urinal, 1x urinal divider, 1x boiler 200l, 2x floor outlet
