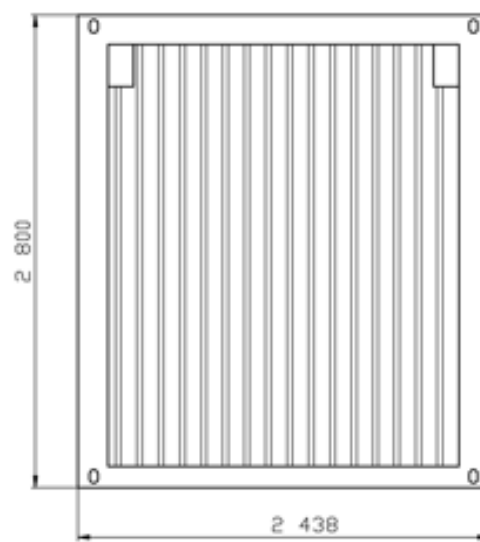
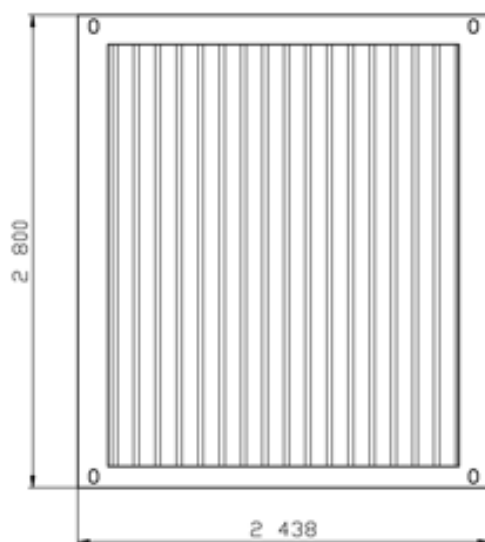
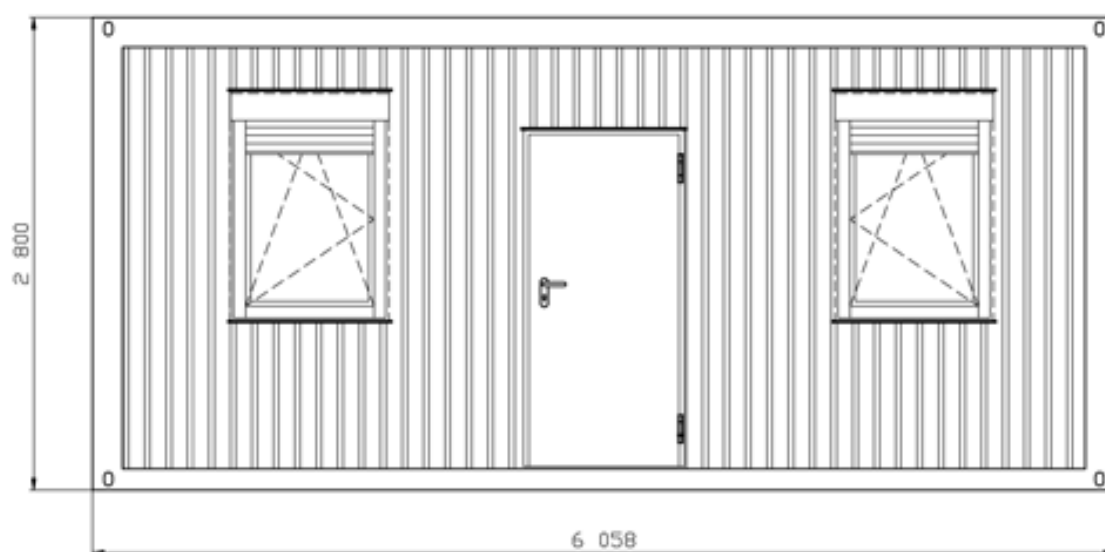
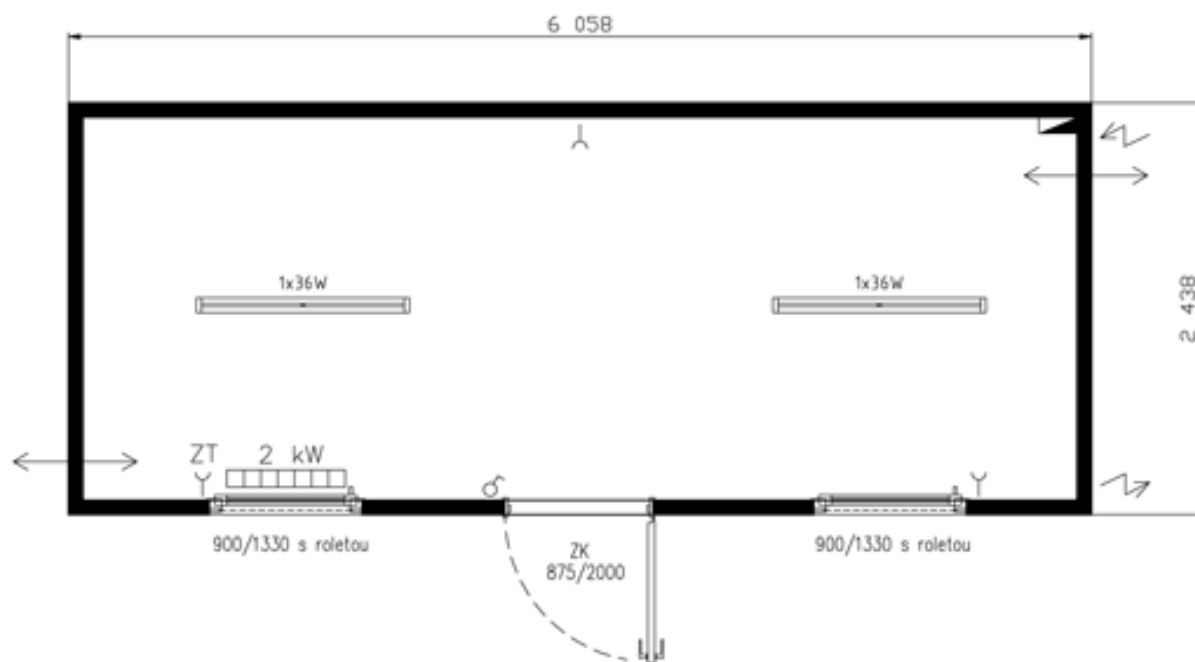



# IM 03 - Standard Line



	typ	IM 03
	izolace	80-60-80

**Roofing** galvanized profiled sheet 0,75 mm, wave depth 35 mm

---

**Insulation** mineral wool 80 mm

---

**Heat transfer coefficient** U=0,527 W/m<sup>2</sup>K (80 mm)

---

**Vapour barrier** PE film 0,11 mm

---

**Inside panelling** bouth sides laminated chipboard 10mm, white

---

**Roof drainage** 4 plastic leads ø60 mm

---

**Floor loading** 150 kg/m<sup>2</sup>

---

## Wall

---

**Outside panelling** galvanized profiled sheet 0,55 mm, wave depth 10mm

---

**Surface finish** light and weather resistant two-component paint in RAL Tone acc.to choice

---

**Insulation** mineral wool 60 mm

---

**Heat transfer coefficient** U=0,632 W/m<sup>2</sup>K (60 mm)

---

**Vapour barrier** PE film 0,11 mm

---

**Inside panelling** bouth sides laminated chipboard 10mm, white

---

## Floor

---

**Construction** steelconstruction, transverse floor beams, floor sheet 0,55mm

---

**Insulation** mineral wool 80 mm

---

**Heat transfer coefficient** U=0,560 W/m<sup>2</sup>K (80 mm)

---

**Floor** chipboard 22 mm / Cetris 20 mm

---

**Flooring** PVC 1,5 mm, grey

---

**Floor loading** 250 kg/m<sup>2</sup>

---

**Vapour barrier** PE film 0,11 mm

---

## Wiring

---

**Norm** ČSN or VDE

---

**Inlet - Outlet** 400V/32A

---

**Light** 2× flourescent light 1×36W with covering, 1x light 60W

---

**Accessories** 3× socket,  
1× switch,  
1× el.heating 2 kW with thermostat

---

**Wiring** 1× 10A, 2× 16A, FI-circuit breaker

---

## Equipment

---

**Doors** 1× steel door, galvanized 875/2000mm, rubber seal, cylindrical lock, painted in container tone  
1x internal door 800/1970 mm, white

---

**Windows** 2× plastic windows 900/1330mm, 1 wing, hinge-opened, incl. PVC blind, white

---